

u-za-gé
[yzaʒe]

des

Usagers

Users

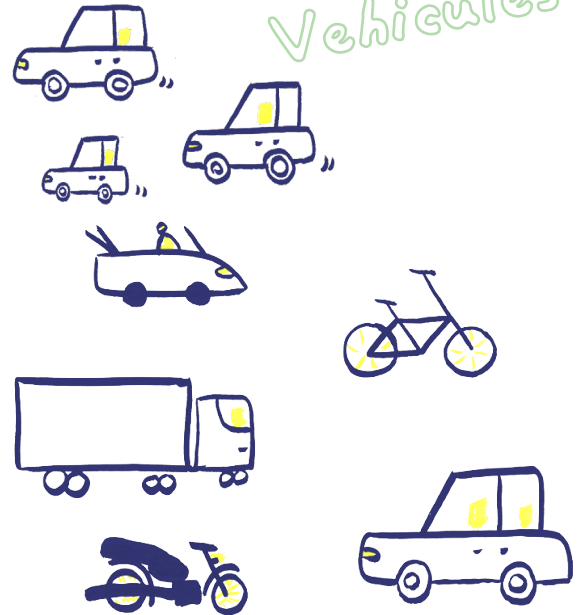


vé-i-kul
[veikyɫ]

des

Véhicules

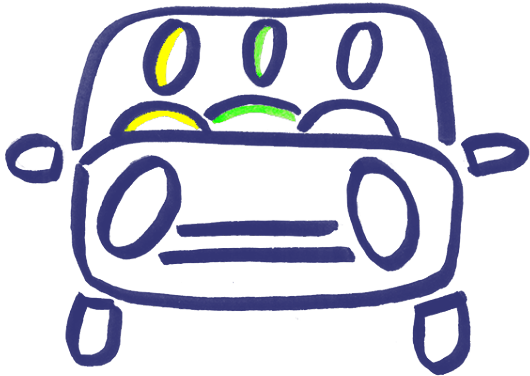
Vehicules



un

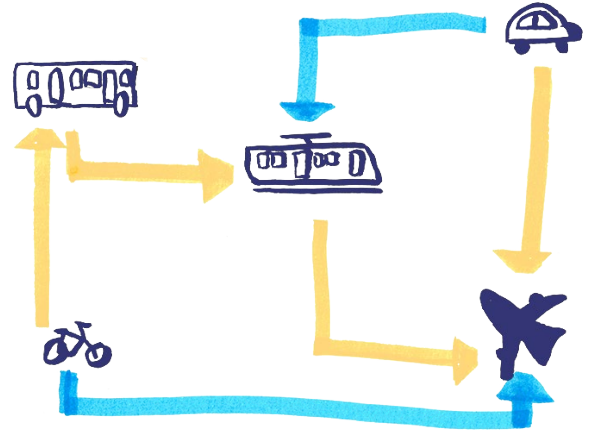
Covoiturage

Carpooling



ko-voa-tu-raj
[kovwatɥʁaʒ]

in-tèr-mo-da-li-té
[ɛ̃tɛʁmɔdalite]



l'

Intermodalité

Intermodality

é-ko-kon-duit
[ekokõdujt]



une
Eco-conduite

Ecodriving

une Sur-

consommation

Over-
consumption



sur-kon-so-ma-sion
[syrkõsomasjõ]

boat ma-nu-èl
[bwat manʁɛ]



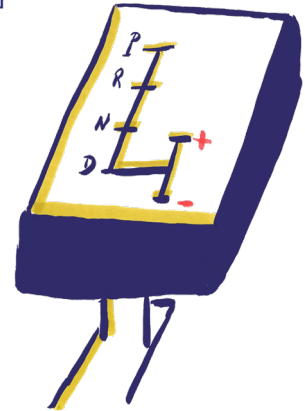
une

Boite

manuelle

Manual
transmission

boat o-to-ma-tik
[bwat otomatik]



une

Boite

automatique

Automatic
transmission

un

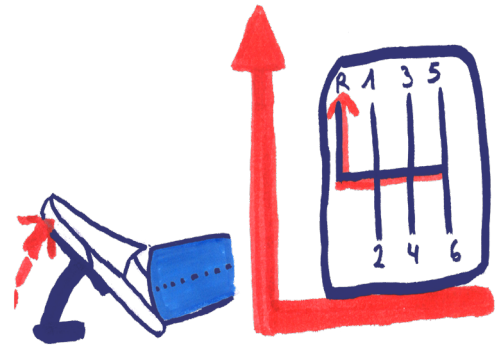
Embrayage

Clutch



an-brè-iaj
[äbrejaʒ]

dé-brè-iaj
[debrejaʒ]

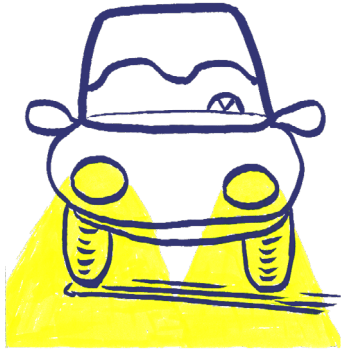


un

Débrayage

Clutching

fe de la voa-tur
[fɛ də la vwatyR]



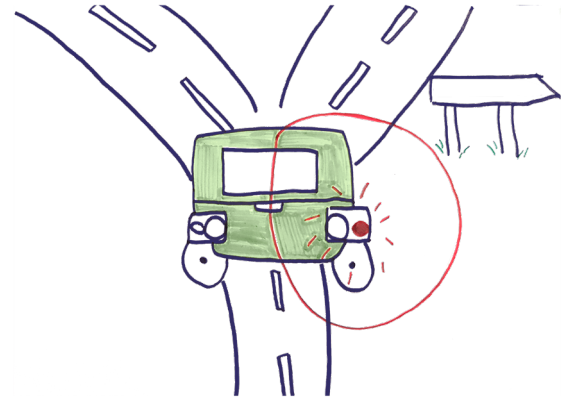
les

Feux

de la voiture

*Automotive
lighting*

kli-nieo-tan
[klijnotā]



un

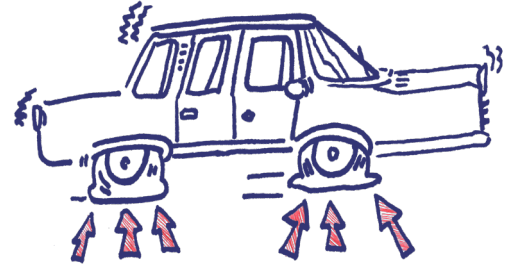
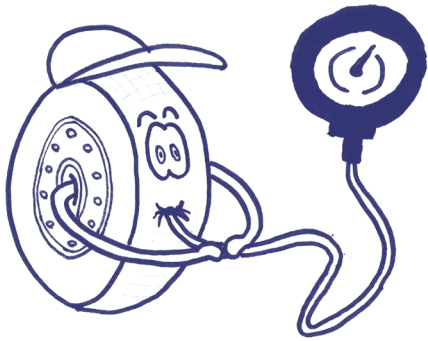
Clignotant

Turn signal

gon-flé
[gõfle]

Gonflés

Inflated



Sous-gonflés

Under-inflated

sou-gon-flé
[sugõfle]

a-vèr-ti-ser
[avertisœr]

un Avertisseur

Car horn

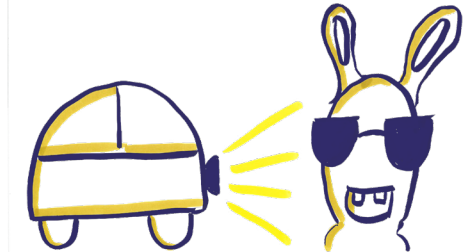


a-pèl de far
[apel də far]

un Appel

de phare

Headlight
Flashing

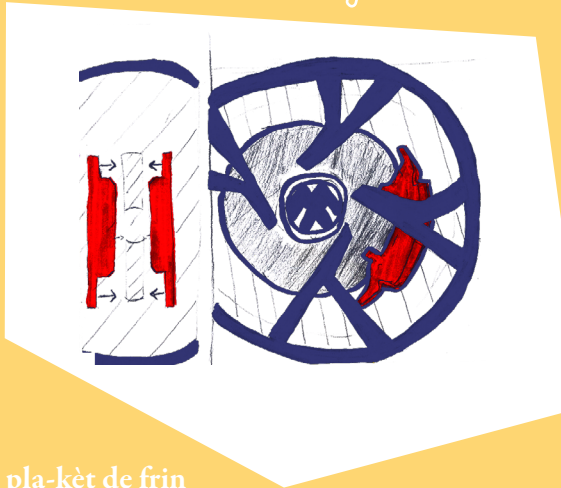


des

Plaquettes

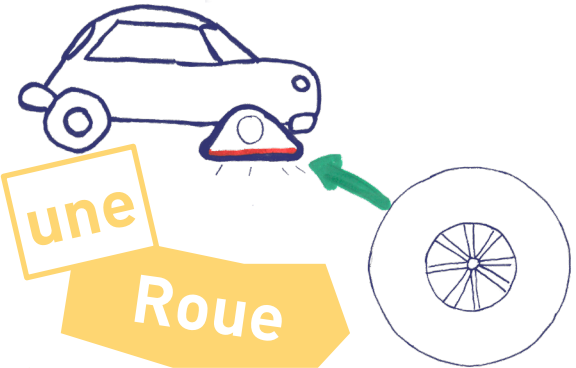
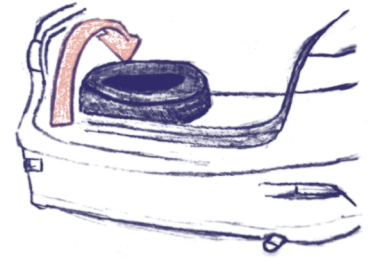
de frein

Brake pads



pla-kèt de frin
[plaket də frɛ]

rou de se-kour
[RU də səkUR]

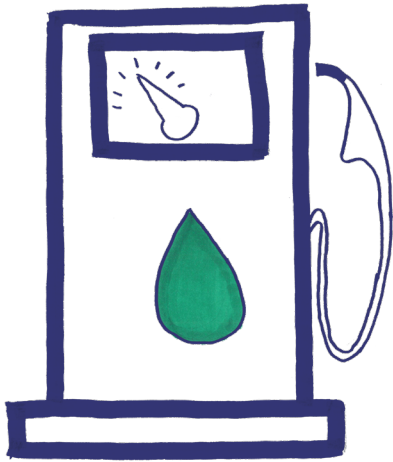


une

Roue

de secours

Spare wheel



un

Carburant

Fuels

kar-bu-ran
[karbyrã]



une

Vidange

Draining

vi-danj
[vidã3]

èr-bag
[ɛRbag]

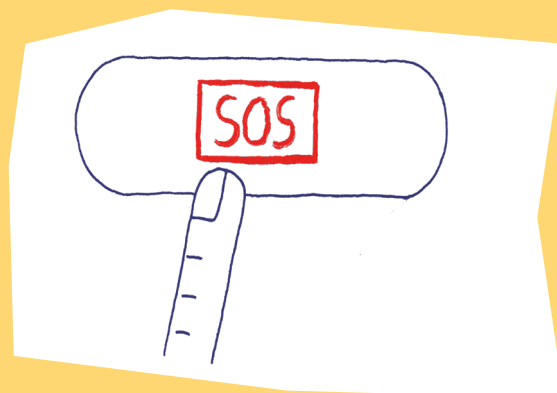


un Airbag
Airbag

sis-tèm da-pèl dur-jens
[sistem d apel yrʒõs]

un Système
d'appel d'urgence

E-Call system

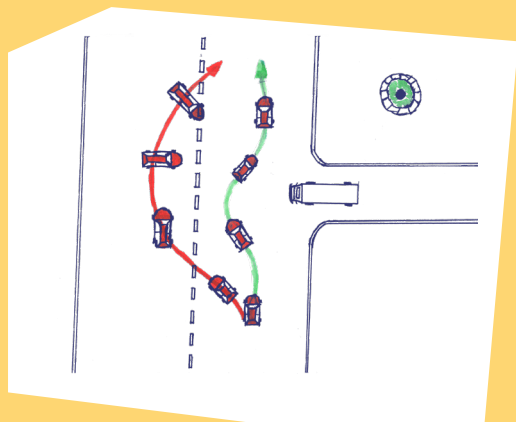


ESP

Electronic

Stability

Programme



té-moin lu-mi-ne

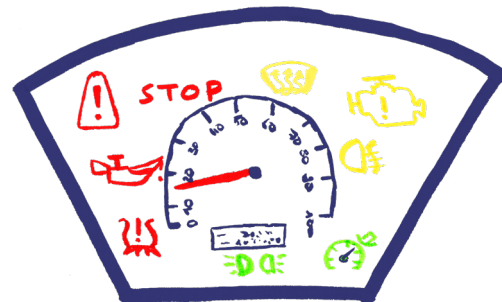
[temwě lyminø]

des

Témoins

lumineux

Dashboard
warning
lights



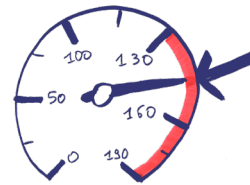
ré-gu-la-ter de vi-tès
[regylatœr də vitès]

un

Régulateur

de vitesse

Cruise control



un

Limiteur

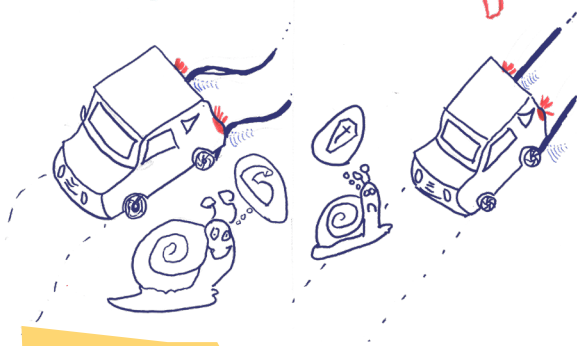
de vitesse

Speed limiter

li-mi-ta-ter de vi-tès
[limitœr də vitès]

(ABS) !! 👍

(ABS) XX 👎

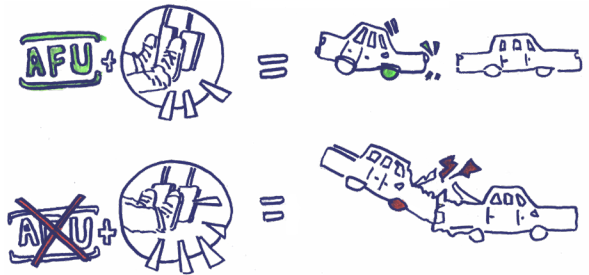


ABS

Anti-blocage

de roue

ABS - Anti-lock braking system

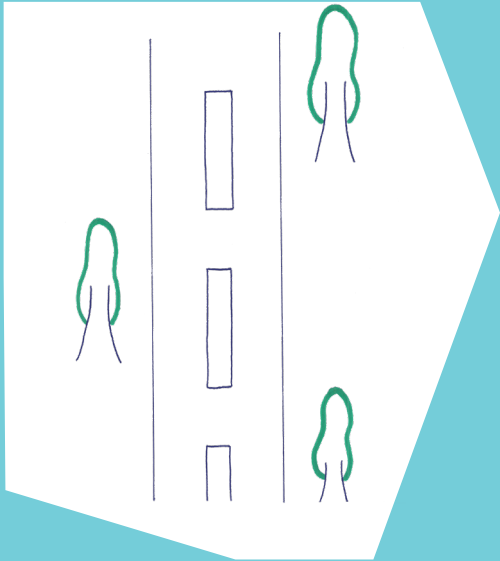


AFU

Aide au freinage

d'urgence

AEB - Automatic emergency braking



une

Chaussée

sho-sé
[[ose]

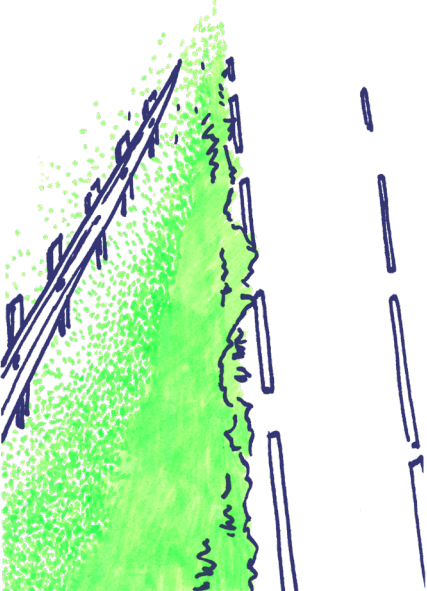
Pavement

a-ko-te-man
[akotmã]

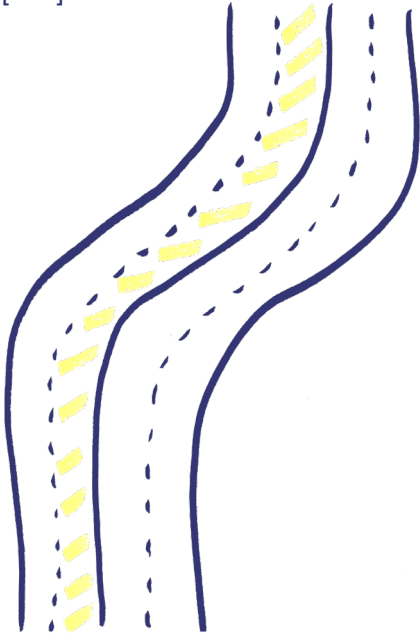
un

Accotement

Breakdown lane



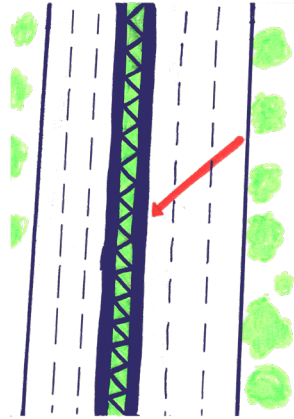
voa
[vwa]



une Voie

Lane

tèr plin san-tral
[tɛR plɛ sãtra]

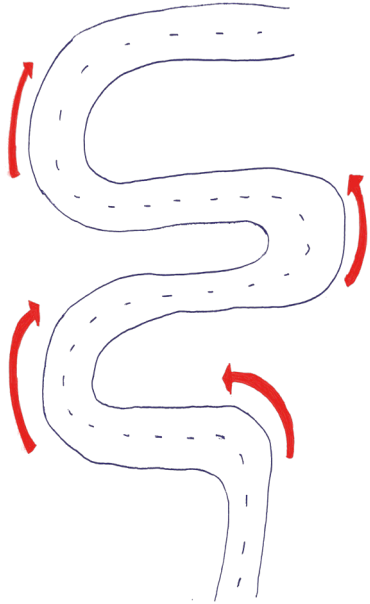


un

Terre-plein

central

Median strip



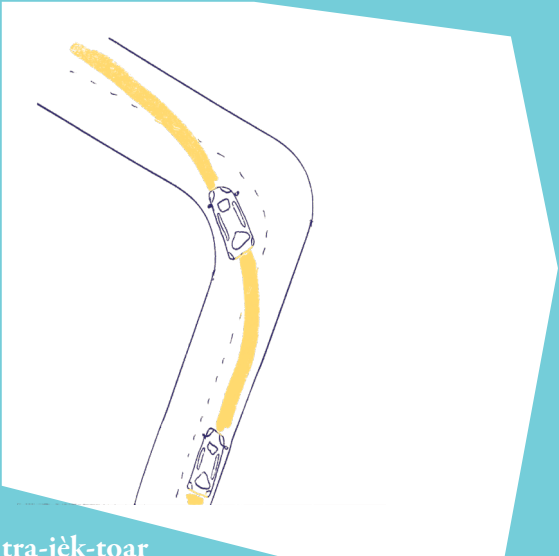
des
Virages

Turns

vi-raj
[viraʒ]

une
Trajectoire

Trajectory



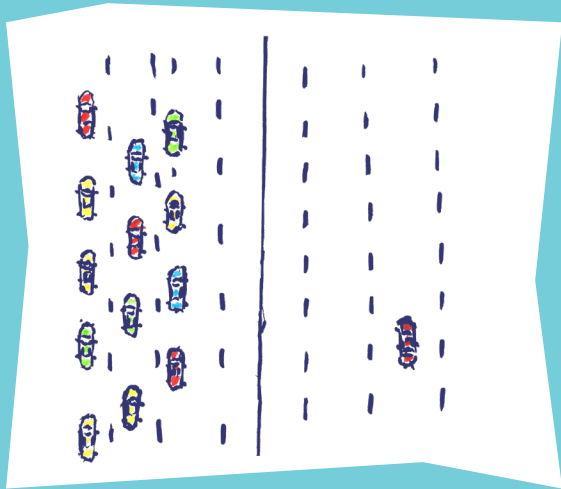
tra-jèk-toar
[traʒɛktwar]

sir-ku-la-sion
[sirkyłasjō]

une

Circulation

Traffic



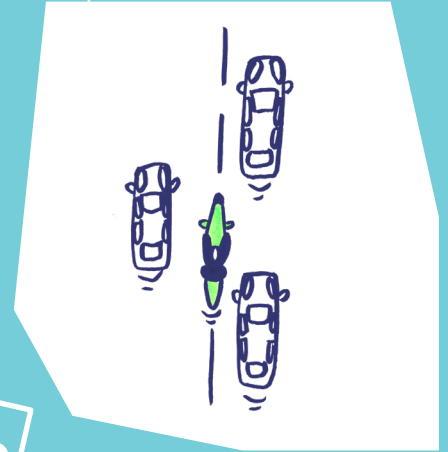
sir-ku-la-sion in-tèr-fil
[sirkyłasjō ètèr-fil]

une

Circulation

inter-file

Lane splitting



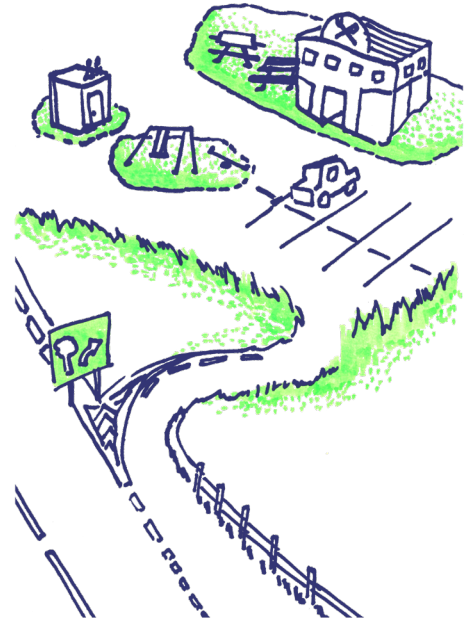
a-glo-mé-ra-sion
[aglomerasjō]



une

Agglomération

City



des

Aires

Rest areas

èr
[ɛRbag]

zon
[zon]

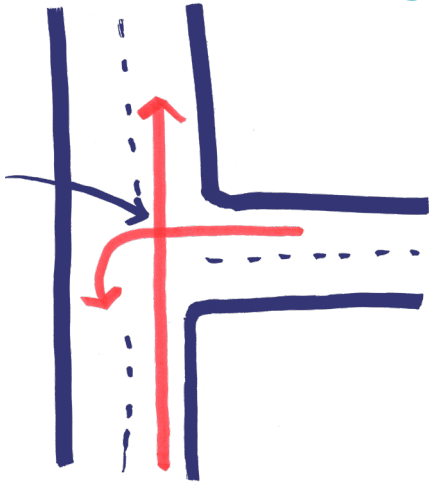
une
Zone
Zone



le

Croisement

Crossroad



kroa-ze-man
[krwazmä]

in-tèr-sk-sion
[è̃tɛʁsɛksjõ]

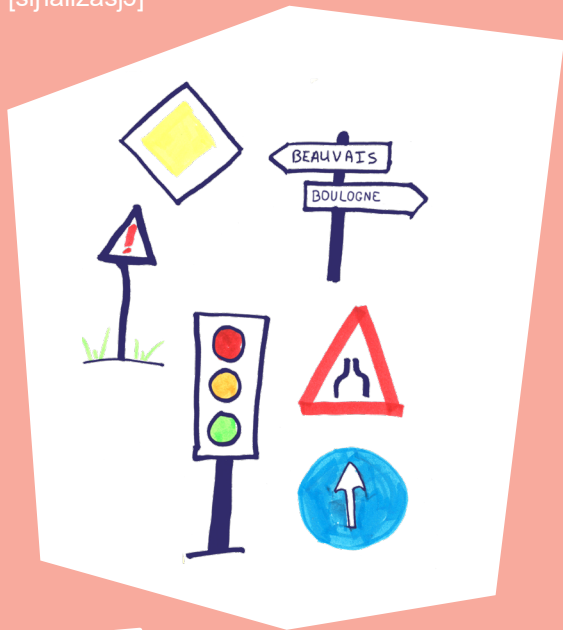


une

Intersection

Crossroad

si-niea-li-za-sion
[sɪnalizasjɔ̃]



une
Signalisation

Traffic signals

si-niea-li-za-sion tan-po-rèr
[sɪnalizasjɔ̃ tãpɔʁɛʁ]

une
Signalisation
temporaire

*Temporary
traffic signals*



mar-ka-je o sol
[markaʒ o sɔl]



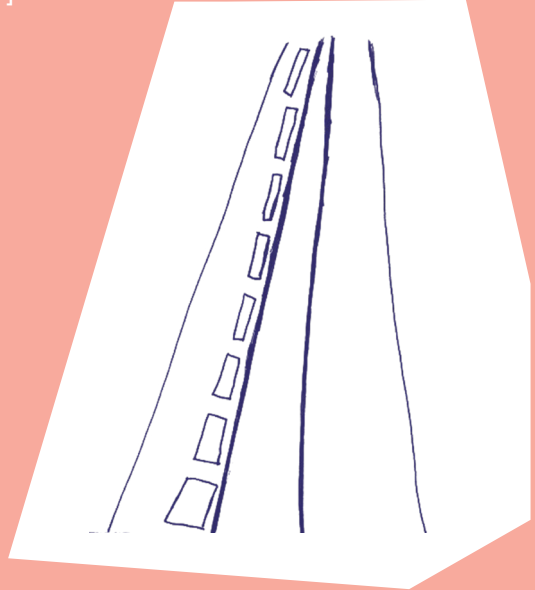
des

Marquages

au sol

Pavement
markings

li-nie
[lij]

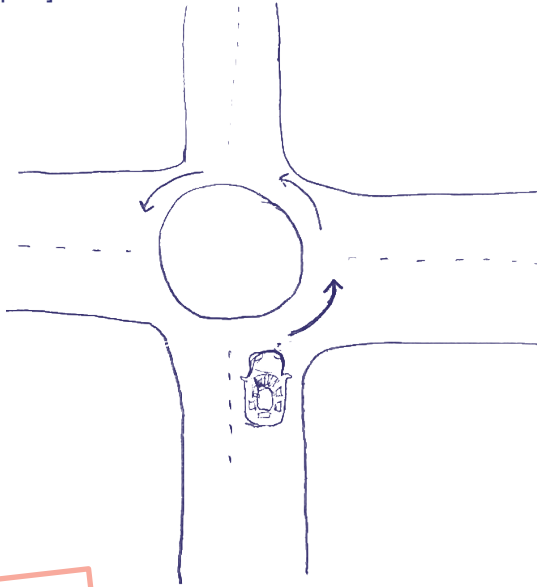


une

Ligne

White lign

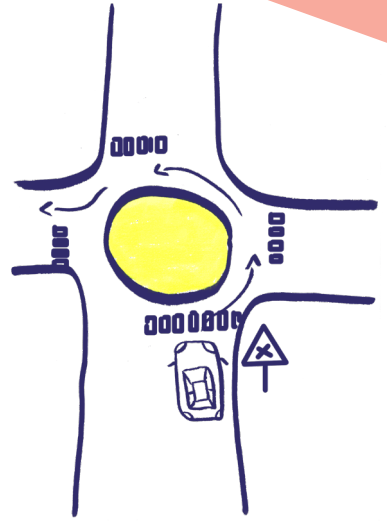
ron-pou-in
[Rõpwē]



un

Rond-Point

Roundabout



un

Giratoire

Roundabout

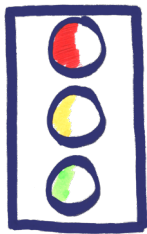
ji-ra-toar
[ʒiratwar]

fe tri-ko-lor
[fə trikolɔʁ]

les

Feux tricolores

Traffic lights

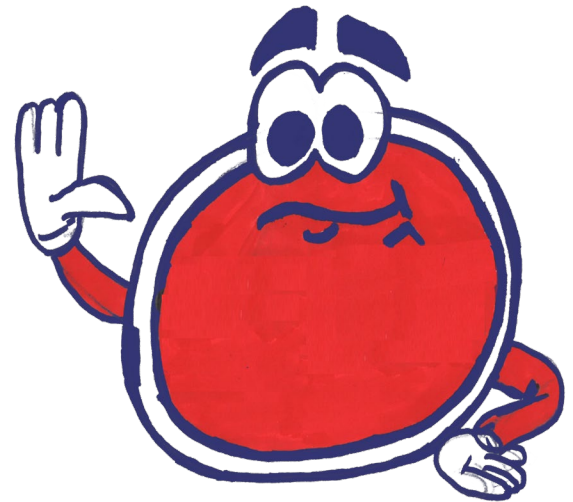


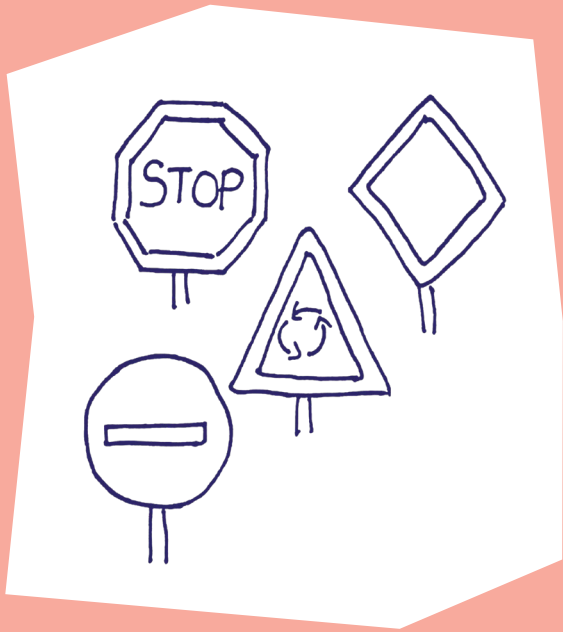
a-rè
[aʁe]

un

Arrêt

Stop





des Panneaux

Road signs

pa-no
[pano]

pa-non-so
[panõso]

un Panonceau

Sign

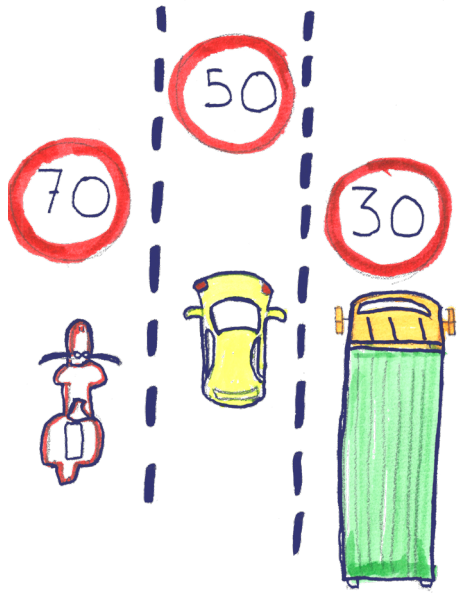


li-mi-ta-sion
[limitasjõ]

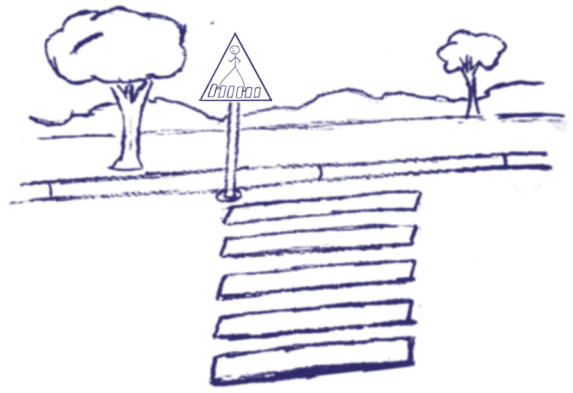
des

Limitations

Limits



pa-saj pié-ton
[pasaʒ pjeto]

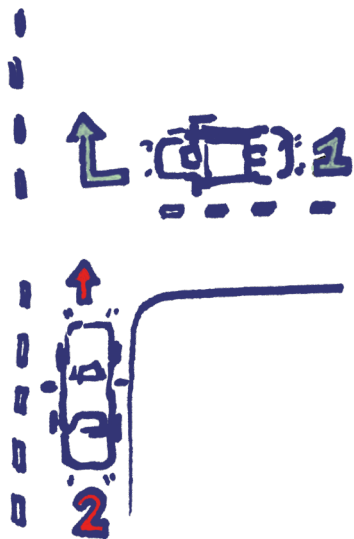


un

Passage piéton

Pedestrian
crossing

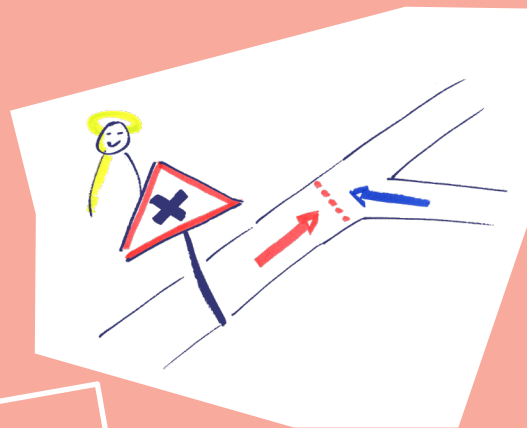
pri-o-ri-té
[prijɔrite]



une

Priorité

Priority



une

Croix

de Saint-André

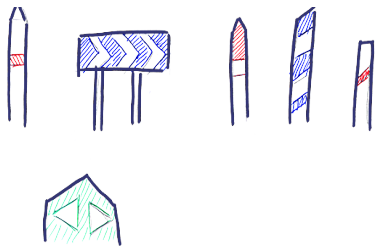
Crossroad
warning sign

kroa de sin-tan-dré
[krwa də sɛ̃ ädre]

des

Balises

Signpost



ba-liz
[baliz]

pa-saj a ni-vo
[pasaz a nivo]

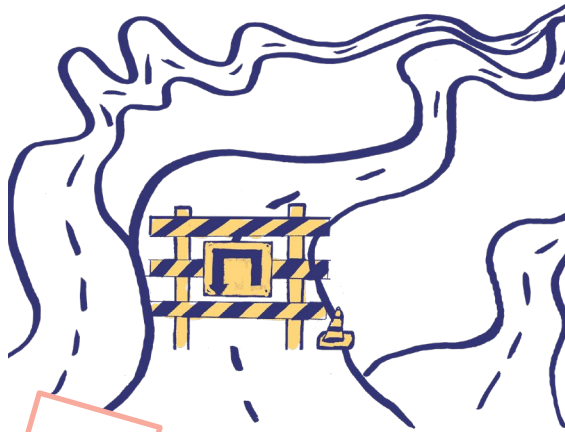


un

Passage

à niveau

Level crossing

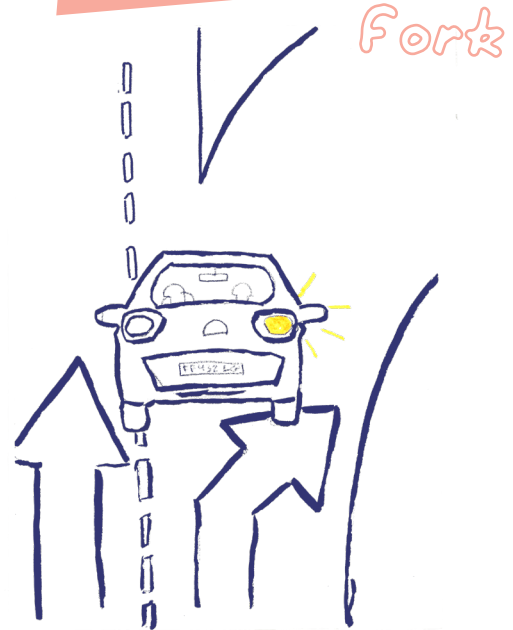


une

Déviation

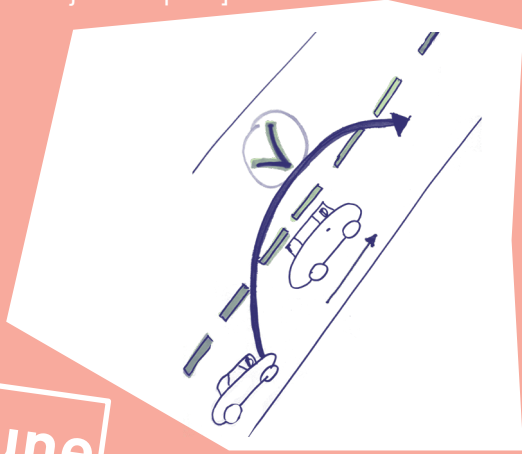
dé-vi-a-sion *Detour road*
[devjasjɔ]

une
Bifurcation



bi-fur-ka-sion
[bifyrkasjɔ]

o-to-ri-za-sion de dé-pa-sé
[ɔtɔrizasjɔ̃ də depasɛ]



une

Autorisation

de dépasser

Permission
to overtake

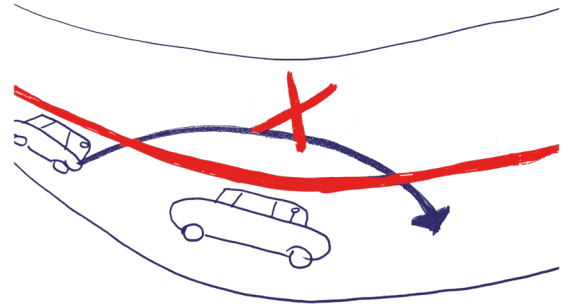
in-tèr-dik-sion de dé-pa-sé
[ɛ̃tɛrdiksijɔ̃ də depasɛ]

une

Interdiction

de dépasser

Prohibition
of overtaking



i-ti-né-rèr
[itinerɛʁ]

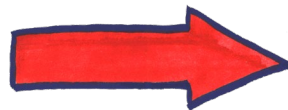


un

Itinéraire

Itinerary

di-rèk-sion
[dirɛksjõ]



les

Directions

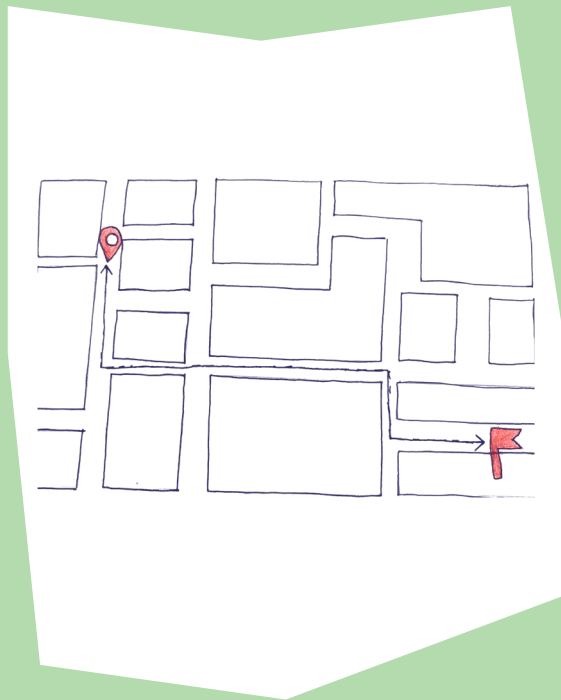
Directions

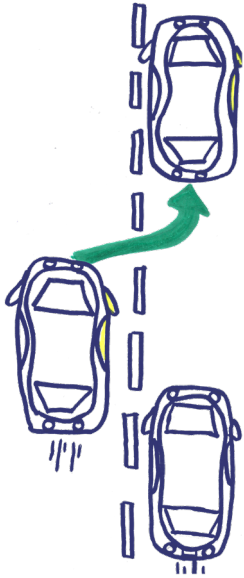
dis-tans
[distās]

une

Distance

Distance





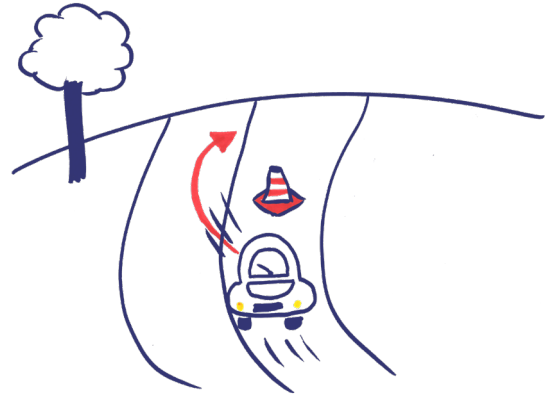
Se rabattre

*to Move back
to the right lane*

se ra-batr
[sə Rabatr]

Se déporter

to Change lane



se dé-por-té
[sə deporte]

dé-pas-man
[depasmã]

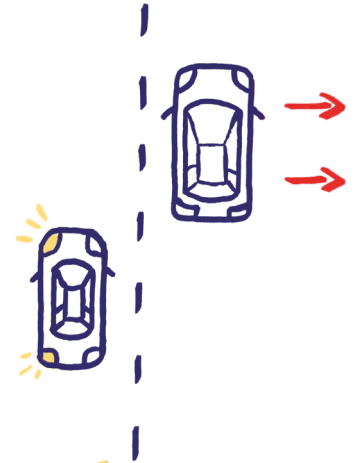


un

Dépassement

Overtaking

sé-ré
[sere]

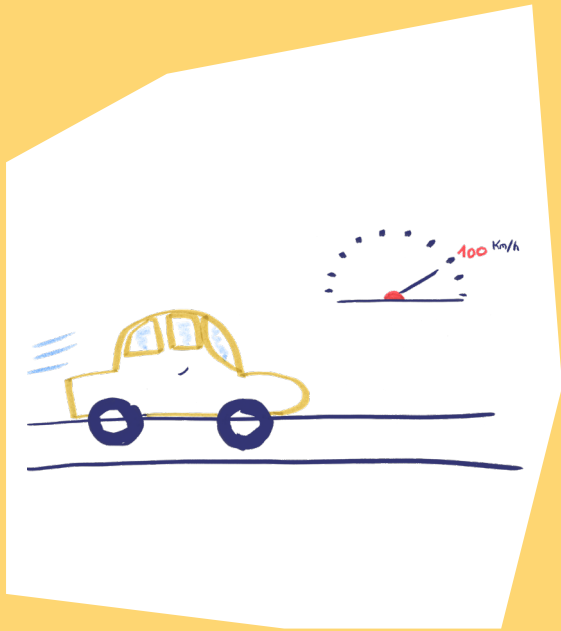


Serrer

à droite

to keep
to the right

vi-tès
[vites]



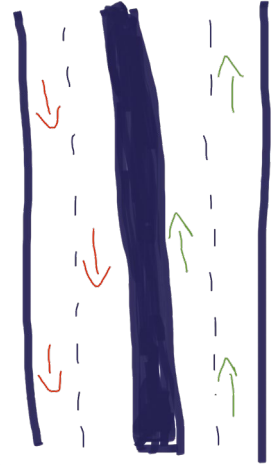
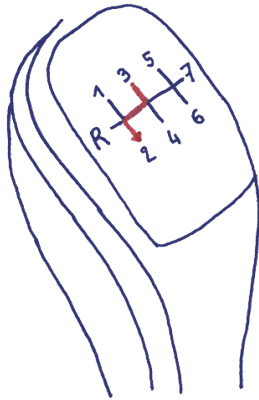
une
Vitesse

Speed

ré-tro-gra-dé
[Retrɔɡʁadɛ]

Rétrograder

to Downshift



un

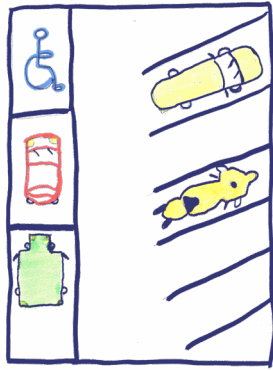
Sens

de circulation

Direction
of traffic

sans de cir-ku-la-sion
[sɑ̃s də sirkylasjɔ̃]

sta-sio-ne-man
[stasjonmā]

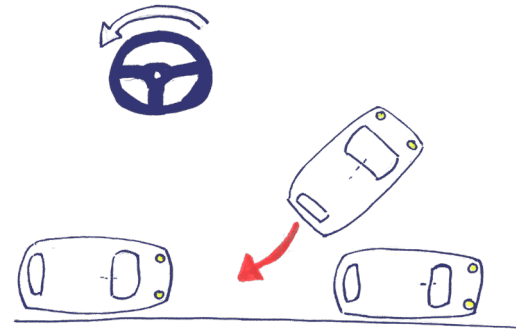


un

Stationnement

Parking

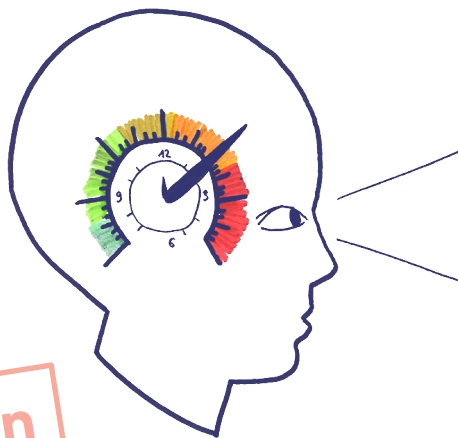
ma-ne-vr
[manœvr]



une

Manœuvre

Manoeuvre



un

Temps

de réaction

Reaction time

tan de réak-sion

[tã də Reaksjõ]

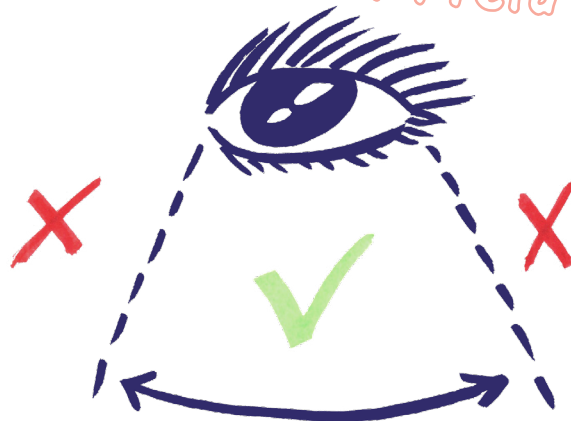
shan vi-zu-èl

[[ã vizyɛl]

un

Champ visuel

Visual Field

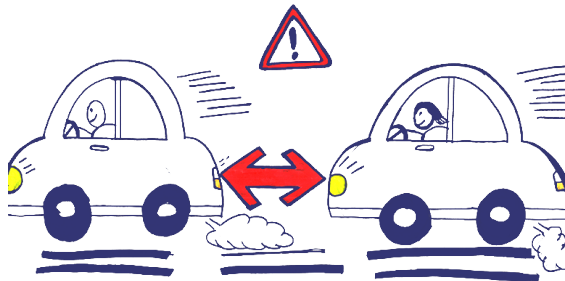


une

Distance

de sécurité

Safe distance



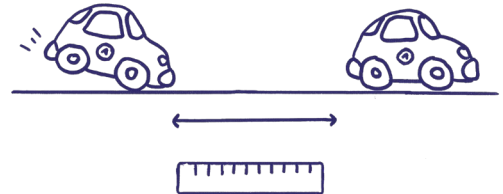
dis-tans de sé-ku-ri-té
[distās də sekʏrite]

une

Distance

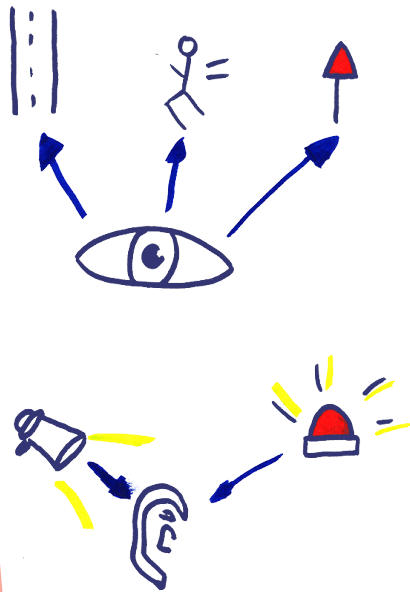
de freinage

Braking distance



dis-tans de frè-naj
[distās də frənəʒ]

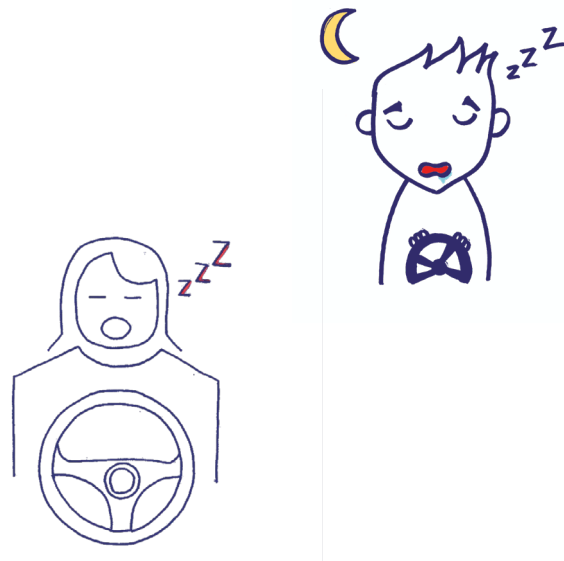
vi-ji-lans
[viʒilās]



une
Vigilance

Vigilance

som-no-lans
[sɔmnolās]



une
Somnolence

Drowsiness

vi-zi-bi-li-té
[vizibilite]

une

Visibilité

Visibility



un

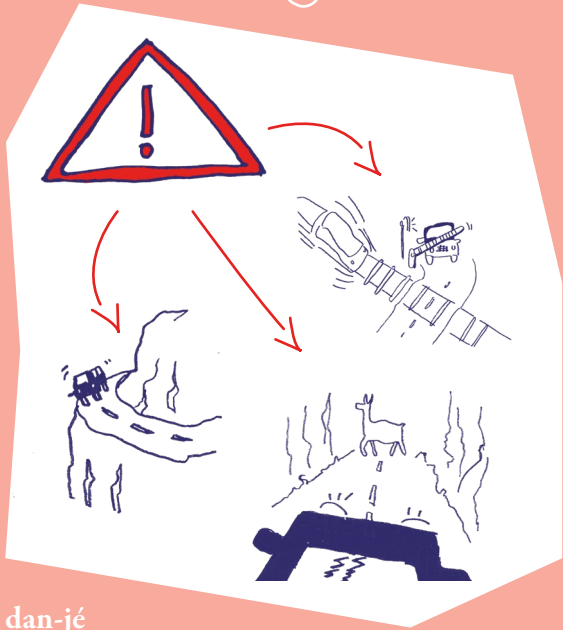
Éblouissement

é-blou-i-se-man
[ebluismä]

Glare

des Dangers

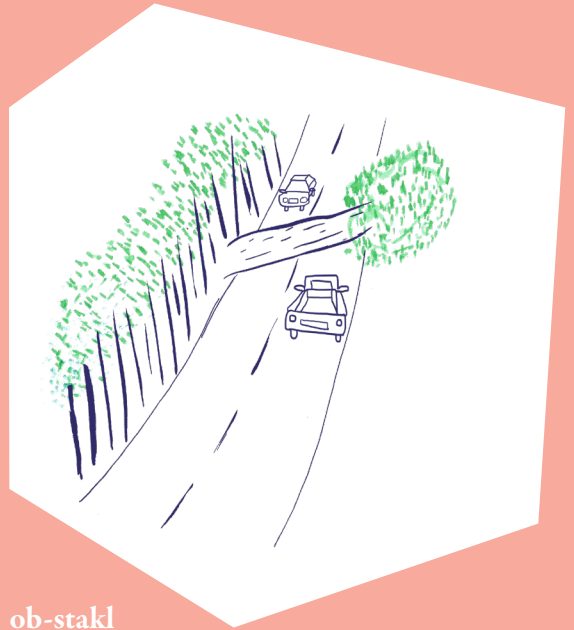
Danger



dan-jé
[dãʒe]

un Obstacle

Obstacle



ob-stakl
[opstakl]

in-tan-pé-ri
[ɛ̃tãpɛri]

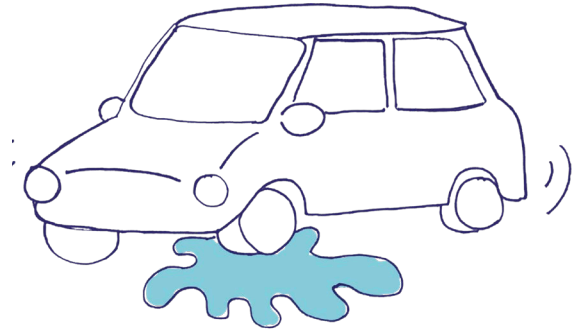


des

Intempéries

Bad weather

a-koia pla-nig
[akwaplaniŋ]



Aquaplaning

Hydroplaning

an-gl mor
[ãgl mɔʁ]

un

Angle mort

Blind spot



PTAC

poids total

autorisé en charge

GVWR -
Gross vehicle
weight rating

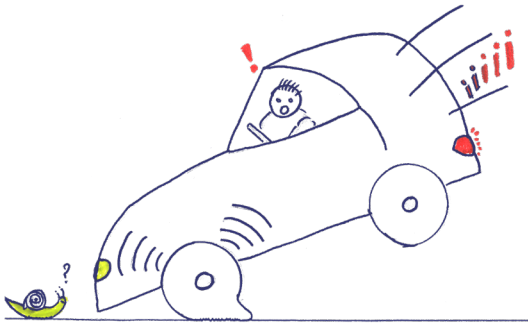
une

Adhérence

Traction



frè-naj
[fʁenaʒ]



un

Freinage

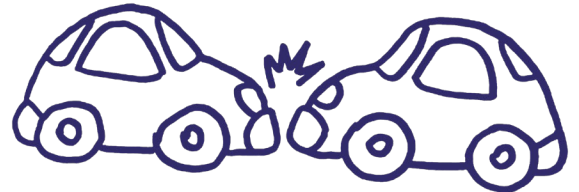
Braking

ko-li-zion
[kolizjõ]

une

Collision

Traffic collision





un

Revêtement

Road coating

re-vè-tman
[RƏvɛtmã]

ni de poul
[ni de pul]

un

Nid de poule

Pothole



pèr-mi pro-ba-toar
[pɛrmi pɔbatwar]



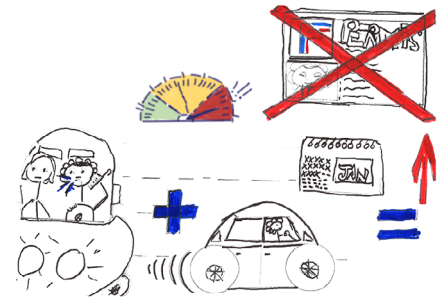
un

Permis

probatoire

Probationary
licence

sus-pan-sion de pèr-mi
[syspãsjõ de pɛrmi]



une

Suspension

de permis

Licence
suspension

rè-gle-man-ta-sion
rè-gle-man-ta-sion

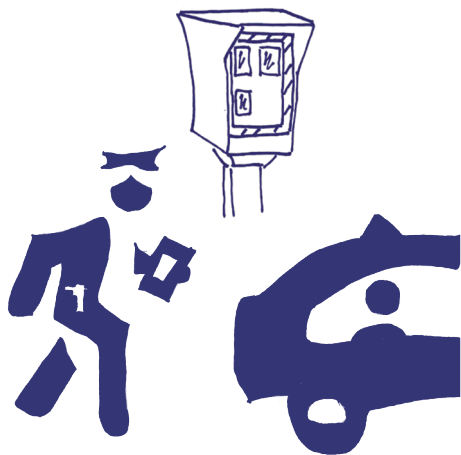


une

Réglementation

Regulations

in-frak-sion
[ɛ̃fraksjɔ̃]



une

Infraction

Infraction

dé-li
[deli]

un

Délit

Offence



une

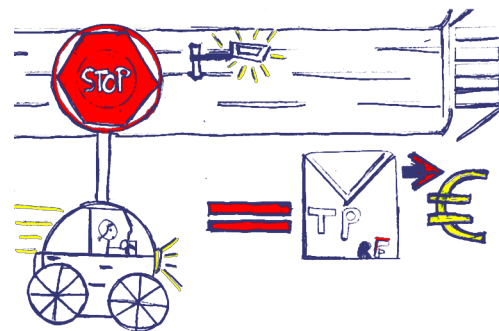
Contravention

Fine



kon-tra-van-sion
[kōtravāsjō]

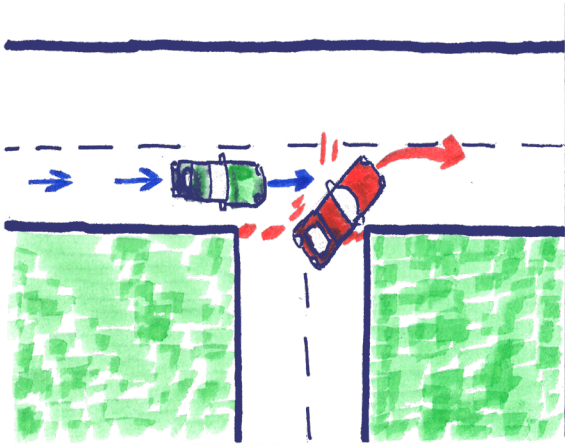
pro-sè vèr-bal
[proseverbal]



un

Procès-verbal

Ticket



un

Refus de priorité

Right-of-way
violation

re-fu de pri-o-ri-té
re-fu de pri-o-ri-té

re-fu dob-tan-pé-ré
re-fu dob-tan-pé-ré

un

Refus

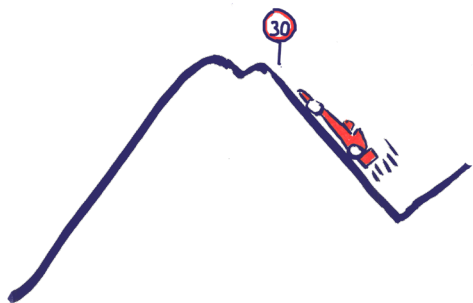
d'obtempérer

Failure
to comply



un Excès
de vitesse

speeding



èk-sè de vi-tès
[ɛkse də vites]



des Stupéfiants

Drugs

stu-pé-fi-an
[stɥepɛfjɑ]